

tempmate.®-S1 v2

➔ Single-Use USB Data Logger for Cold Chain Temperature Monitoring



+ 2 Years Shelf-Life¹

+ Automatic PDF & CSV Report

+ Up to 180 Days² Recording

+ Reprogrammable

+ Up to 5 Alarm Limits

+ Active and Status LEDs

+ Validation Certificate Included

+ Backup-Log Feature³

1 Depending on Storage Conditions | 2 Depending on Configuration | 3 Background Logging, even if stopped too early



PHARMACEUTICAL PRODUCTS



FOOD & PRODUCE



TECHNICAL PRODUCTS

Outstanding Single-Use Temperature Logger, for Reliable Cold Chain Monitoring.

The new tempmate.®-S1 v2 loggers have an integrated USB port and PDF & CSV generating software on-board, so no further software or hardware is required to connect the logger and read the recorded temperature data.



tempmate.com



USB Connection



IP 67 Protected



Temperature Range -30°C to +70°C



GDP compliant



EN 12830 Compliant



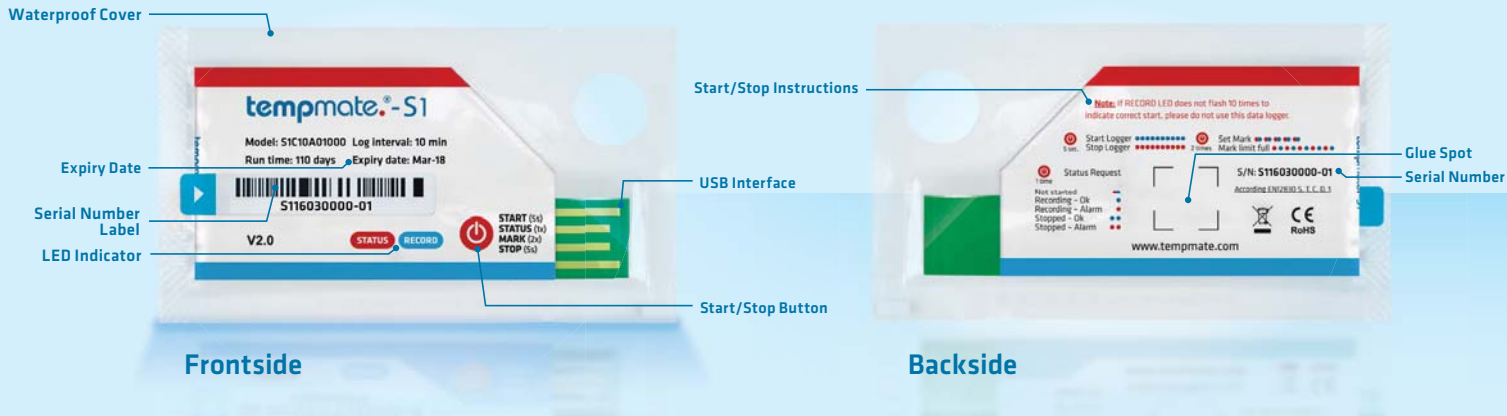
Automatic PDF & CSV Report



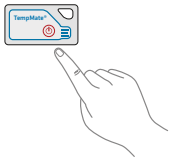
German Quality

tempmate.®-S1 v2

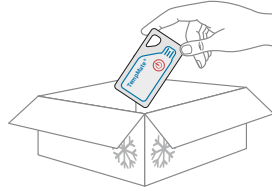
If temperature matters.



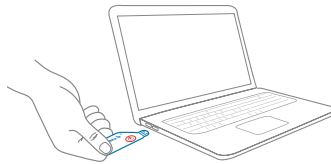
Easy Handling



01 Preconfigured and ready to use



02 Add started tempmate.-S1 to your Shipment



03 Connect stopped Logger directly to USB Port



04 Automated PDF & CSV Report with all Details

Curious about your Cold Chain?

tempmate.®-S1 continuously monitors all relevant data.

tempmate.®-S1 loggers are specially designed for temperature monitoring in any cold chain logistics. As a pre-programmed device tempmate.®-S1 can be instantly used to monitor your temperature sensitive consignment. The automatically created PDF and CSV report, containing detailed information such as data curve, every single measurement as a table and statistical information. The optional tempbase.® software for data management and reprogramming can be downloaded for free.



Your Benefits at a Glance

- + Cost-Effective and Reliable
- + Smart Design, Intuitive Operation
- + Waterproof and Food Grade Packing
- + No Additional Hardware or Software Required
- + Detailed PDF and CSV Report Including Graph and Table
- + Intelligent LEDs for Status Monitoring
- + Extended Shelf-Life of 2 Years
- + Reprogrammable

Technical Specifications

Recording Options	Single-Use
Temperature Range	-30 °C to 70 °C
Temperature Accuracy	±0.5 (-20°C/+40°C); ±1.0 (other range)
Temperature Resolution	0.1 °C
Data Storage Capacity	16.000 readings
Shelf Life / Battery	2 years ¹ / CR2450 button cell
Recording Interval	10 minutes (standard, others on request)
Recording Duration	up to 110 days ² (standard, others on request)
Startup Mode	Button or software
Stop Mode	Button, software or stop when full
Protection Class	IP67 / NEMA 6
Dimensions	83 mm × 47 mm × 7 mm (L × W × H)

Weight	14.6 g
Certifications	EN 12830, CE, RoHS
Validation Certificate	Hardcopy and PDF file in memory
Software	PDF or CSV Reader / tempbase.® optional
Report Generation	Automatic PDF & CSV report
Password Protection	Optional on request
Connection Interface	USB 2.0, A-Type
Alarm Configuration	Optional, up to 5 points
Reprogrammable	Yes, with free tempbase.® software
Accessories incl.	Shipping Documents, Certificate, Reprogram Label and Seal-Bag

1 Depending on optimal storage conditions (+15°C to +23°C / 45% to 75% rH)
2 Depending on application temperature (very low / high temperatures may shorten it)



imec Messtechnik GmbH
Deutschland

Lilienthalstraße 23
74078 Heilbronn

T +49 7066.9150 230
F +49 7066.9150 233

info@imec.de
www.imec.de

